

DSVMD

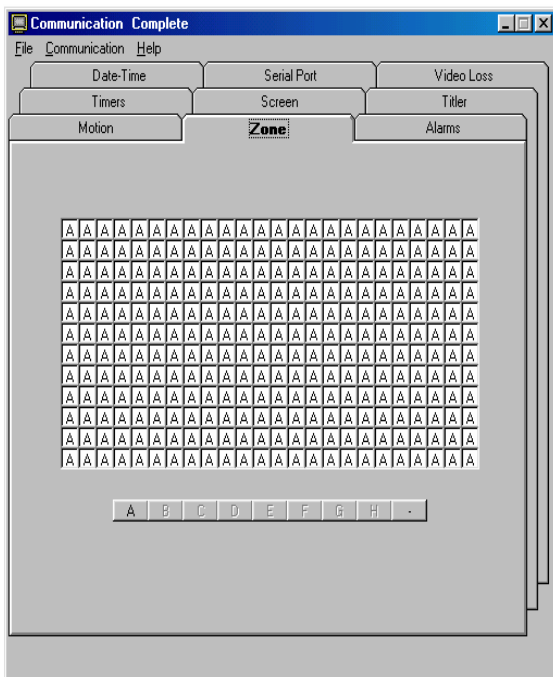
Software for Programming and Controlling the DS1-PL and DS-16

RS-232 Serial Programming TCP/IP UDP Ethernet LAN Adapter Programming IP Address Serial Programming

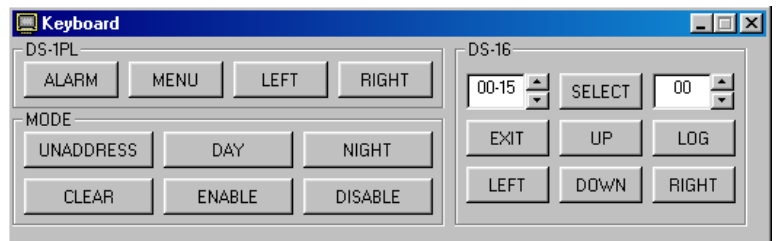
Introduction

The DSVMD Software is a powerful PC Windows based application that allows users to program all the configuration settings of the DS1-PL or DS-16 on a PC. Many additional features can then be realized like Uploading and Downloading configurations saved on the PC. Interactive windows allow remote operators to view Alarm Status and Output Data on the PC screen along with the ability to remote the front panel keyboard of the VMDs for instant function changes.

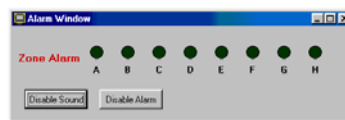
The DSVMD operates either with direct RS-232 connection or via the TCP/IP DS Ethernet LAN adapter communicating in the UDP format. The TCP/IP DS adapter opens a whole new realm of operation of the DS1-PL which allows devices to be placed through out the facility with programming and reporting done via the Ethernet LAN. No longer is it necessary to interactively view the video monitor or connect hard alarms, all data is delivered directly to your PC Desktop.



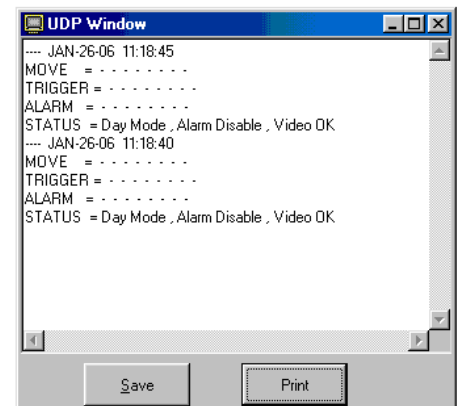
Main Menu



Remote Keyboard



Alarm Window



Status Window

